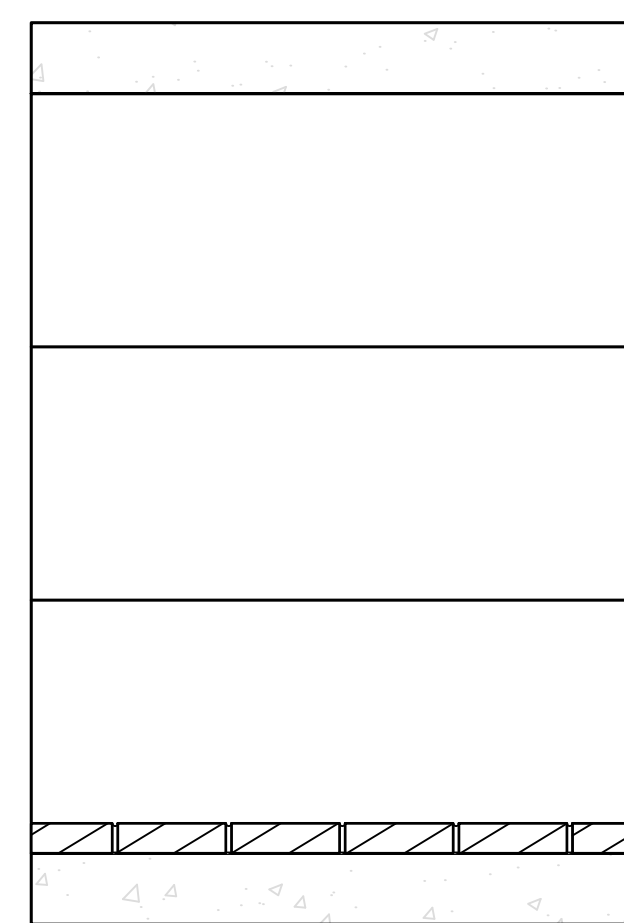
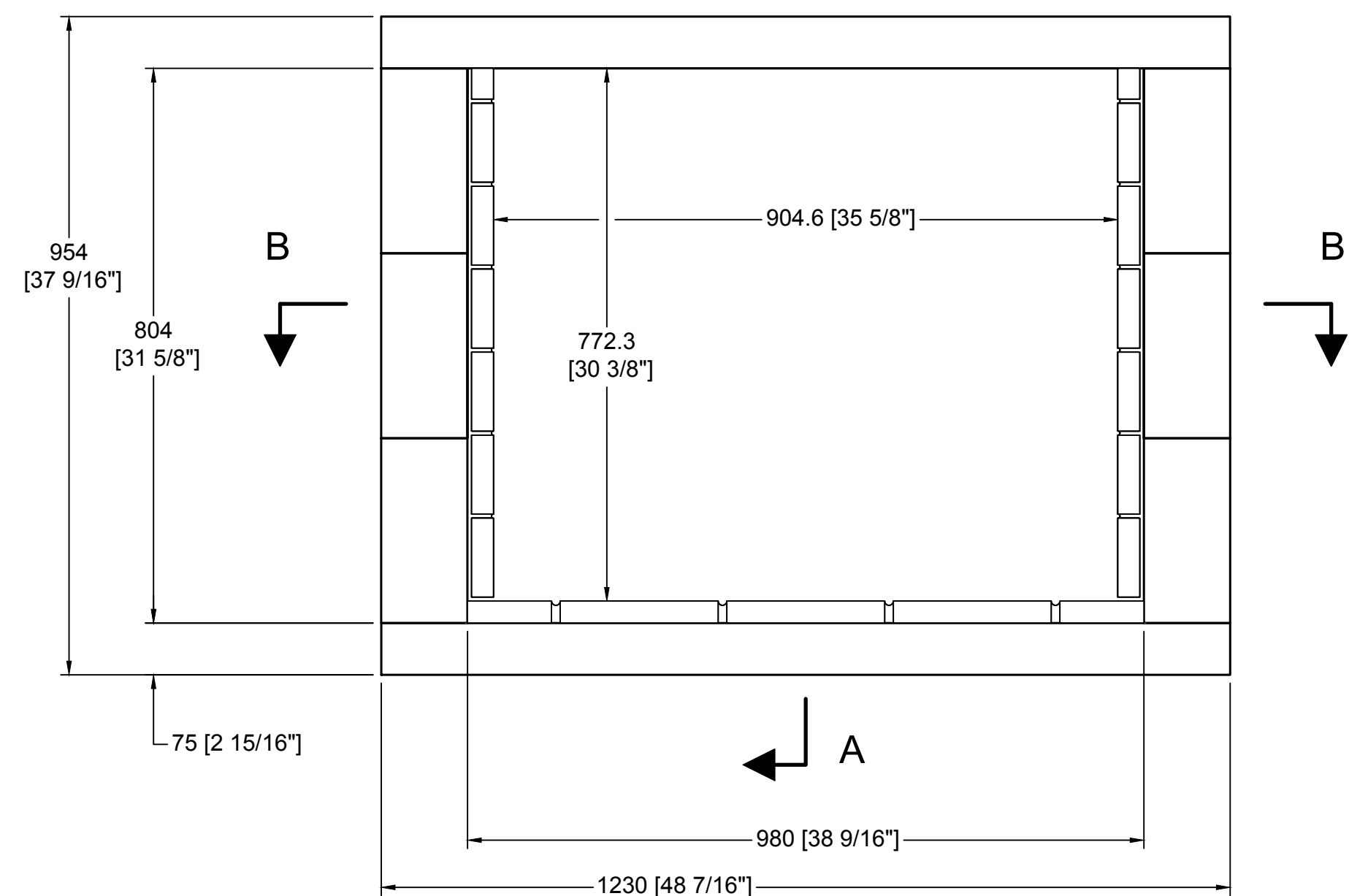
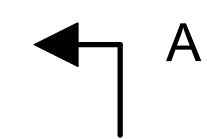
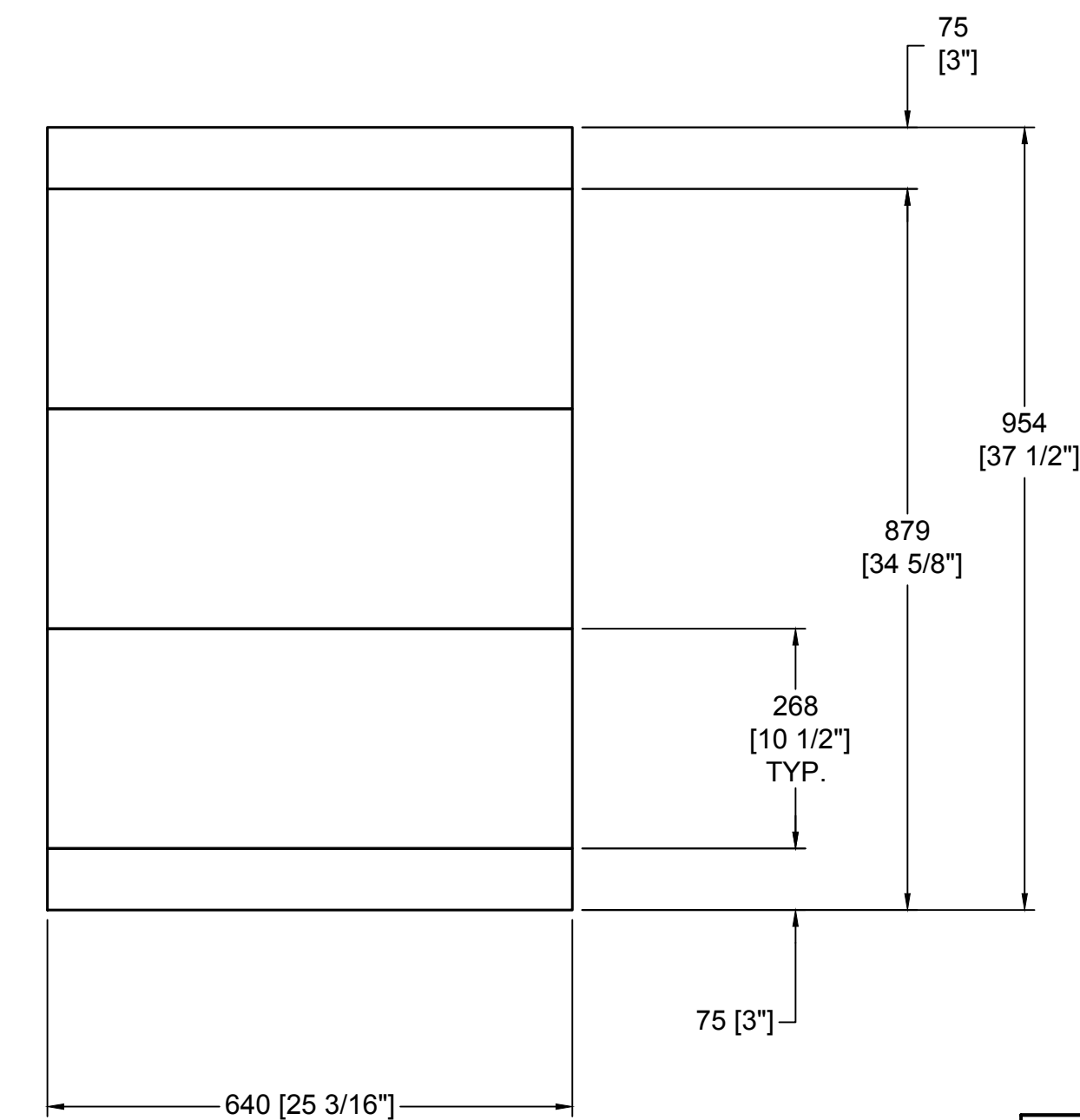


SECTION B-B

MINIMUM  
9" x 4 1/2" x 1 1/4" FIREBRICK  
W/ 1/4" MORTAR.



SECTION A-A



ISOMETRIC VIEW (N.T.S)

COMPONENT LIST

PART #	DESCRIPTION	QTY.
22	BASEPLATE-42" (STD)	2
25	BACKWALL-36" (STD)	6

GENERAL NOTES

1. DRAWINGS ARE FOR DESIGN PURPOSES ONLY AND ARE THE SOLE PROPERTY OF EARTHCORE INDUSTRIES. ANY REPRODUCTION OR UNAUTHORIZED USE IS STRICTLY PROHIBITED.
2. EARTHCORE/ ISOKERN OR ANY DIVISION THEREOF SHALL NOT BE HELD LIABLE FOR ANY INCIDENTAL OR CONSEQUENTIAL DAMAGES OR EXPENSES ARISING OUT OF THE USE OF THE FIREPLACES OR CHIMNEY SYSTEMS.
3. ALWAYS CHECK LOCAL BUILDING CODES GOVERNING FIREPLACES AND FIREPLACE INSTALLATIONS.

	UNLESS OTHERWISE STATED, ALL DIMENSIONS ARE IN MILLIMETERS		PROJECT: 42" VENT FREE-SEE THRU		
	UNSPECIFIED TOLERANCES	THIRD ANGLE PROJECTION	DESCRIPTION: FIREPLACE CONSTRUCTION DOCUMENT		
ANG. X ±		MATERIAL: E.C. PUMICE MIXTURE			
LIN. X ±		DRAWN: K.B.H.	DATE: 5/15/2017	SIZE: 1-1/2"=1'-0"	DRAWING #: 81042ST
XX ±	APPROVED:	DATE:	D	SCALE: 1-1/2"=1'-0"	REV:
5899 Phillips Industrial Blvd. Jacksonville, FL 32256		DO NOT SCALE		SHEET # 1 OF 1	