

ISOKERN OUTDOOR KITCHENS

A PRODUCT OF EARTHCORE INDUSTRIES INSTALLATION, and OWNER'S MANUAL

Important: This manual contains assembly steps and guidelines, for the Outdoor kitchens assemblies. This manual must become the property of and be reviewed by all current and future users of this product. It is the responsibility of the general contractor and the installer of this product to ensure that the instructions in this manual are followed exactly.

INSTALLER: Leave this manual with the components
CONSUMER: Retain this manual for future reference

Be Sure to Read Entire Manual Before Beginning Construction.
Contents of this manual may change without prior notification.

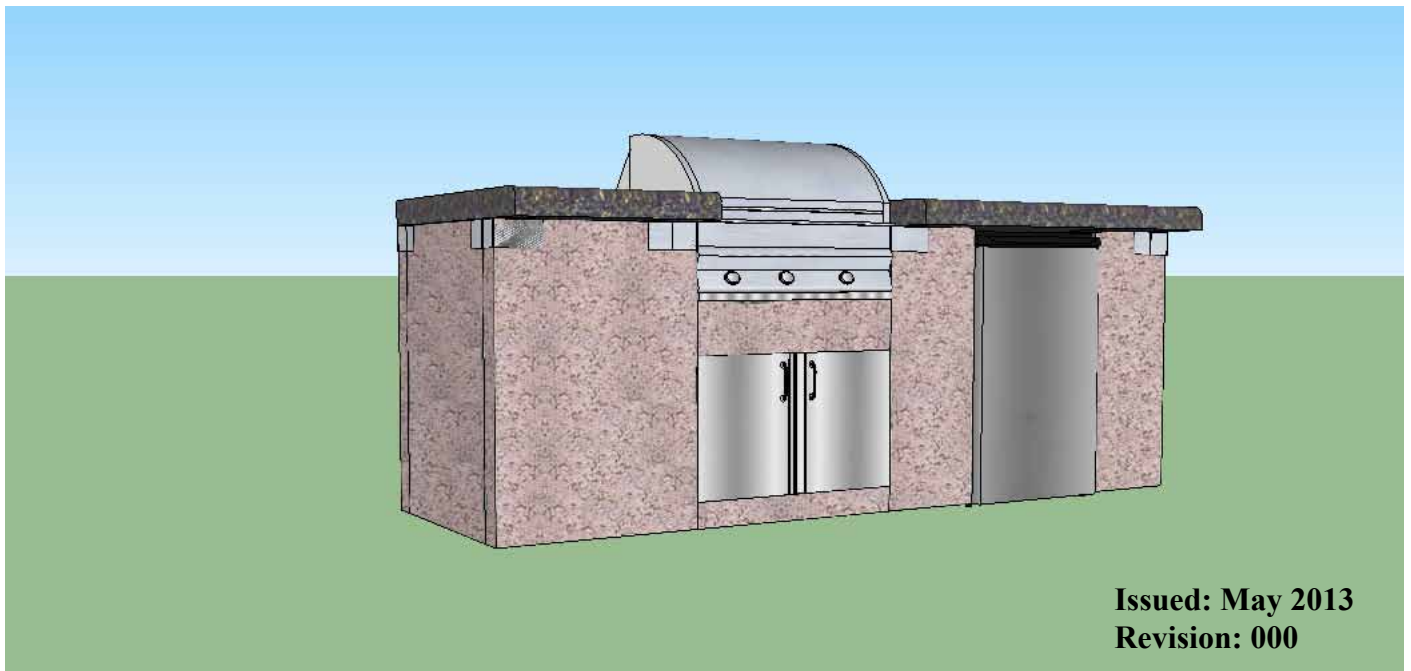


Table of Contents

General Information	3
Assembled Kitchen Component Dimensions	4-6
Kitchen Installation	7
Specialty Application -	8
Summary	9
Notes-Maintenance Information.....	10
Warranty	

Note: Illustrations shown in this manual are not to scale and are intended to show “typical” installations. Nominal dimensions are given for design and framing reference only since actual installations may vary due to job specific design preferences. However, always maintain minimum clearances to combustible materials and do not violate any specific installation requirements.

General Information

The Isokern Outdoor Kitchen are prefabricated, refractory modular panels designed for field assembly. The system consists of precast components which are first held together with metal clips screwed to the Isokern with tapcon screws, then glued together with a masonry adhesive.

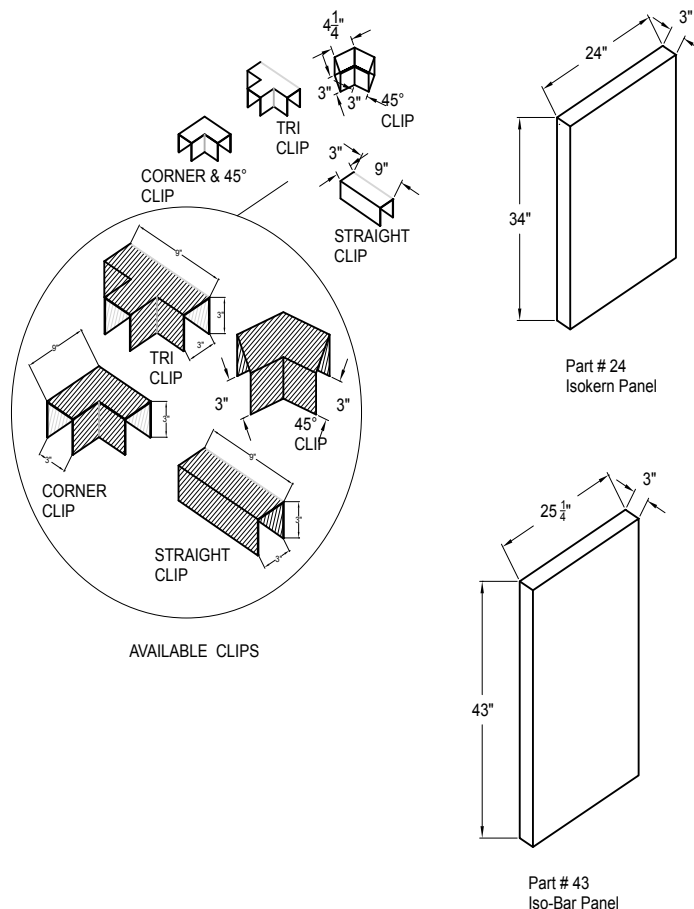
The parts of the Isokern Outdoor Kitchen are a proprietary mixture of volcanic pumice aggregate and cement. The oven liner is a proprietary refractory material. It includes all the parts necessary for assembly of a complete Wood Fired Oven.

Each ISO'ven precast component is designed for a variety of uses adding flexibility to the design of your outdoor kitchen. means for assembly is possible.

The various Isokern Outdoor Kitchen components will be described and illustrated in the following pages. Close attention should be paid to each component group's specifications and installation requirements as described in this manual.

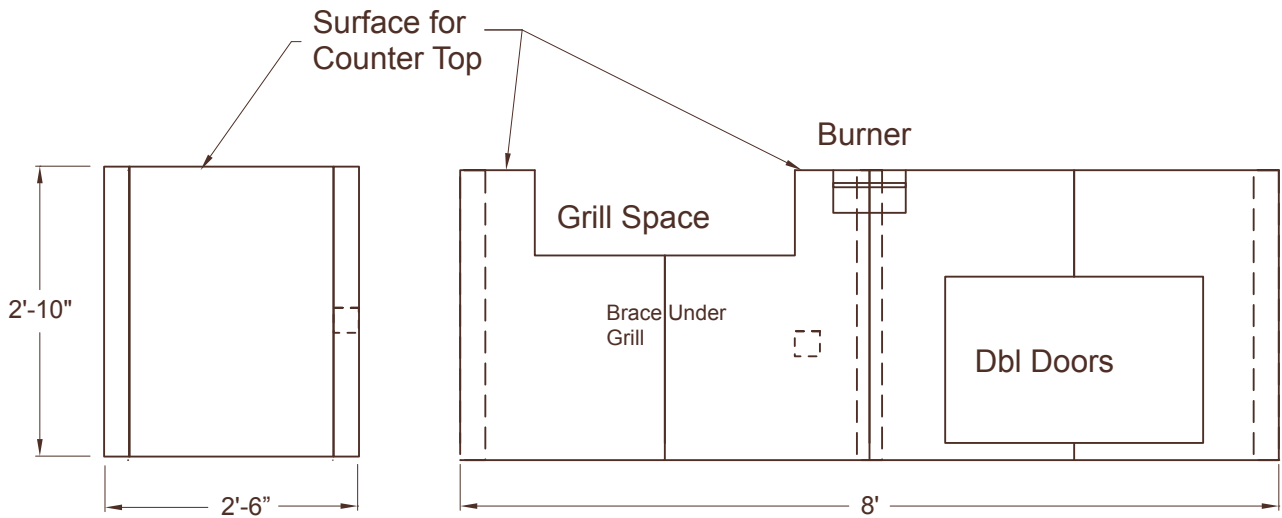
Important: Prepare base to handle the ISO'kitchen panels to support weight of 65 lbs., each. The weight of the Iso-Bar panels are 85 lbs., each.

Panel Components



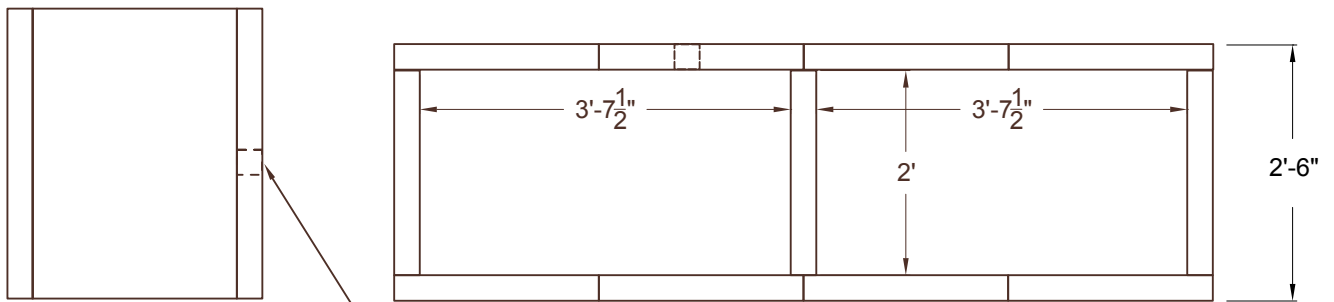
Kitchen Component Dimensions

8' Kitchen



Side View

Front View



Side View

Plan View

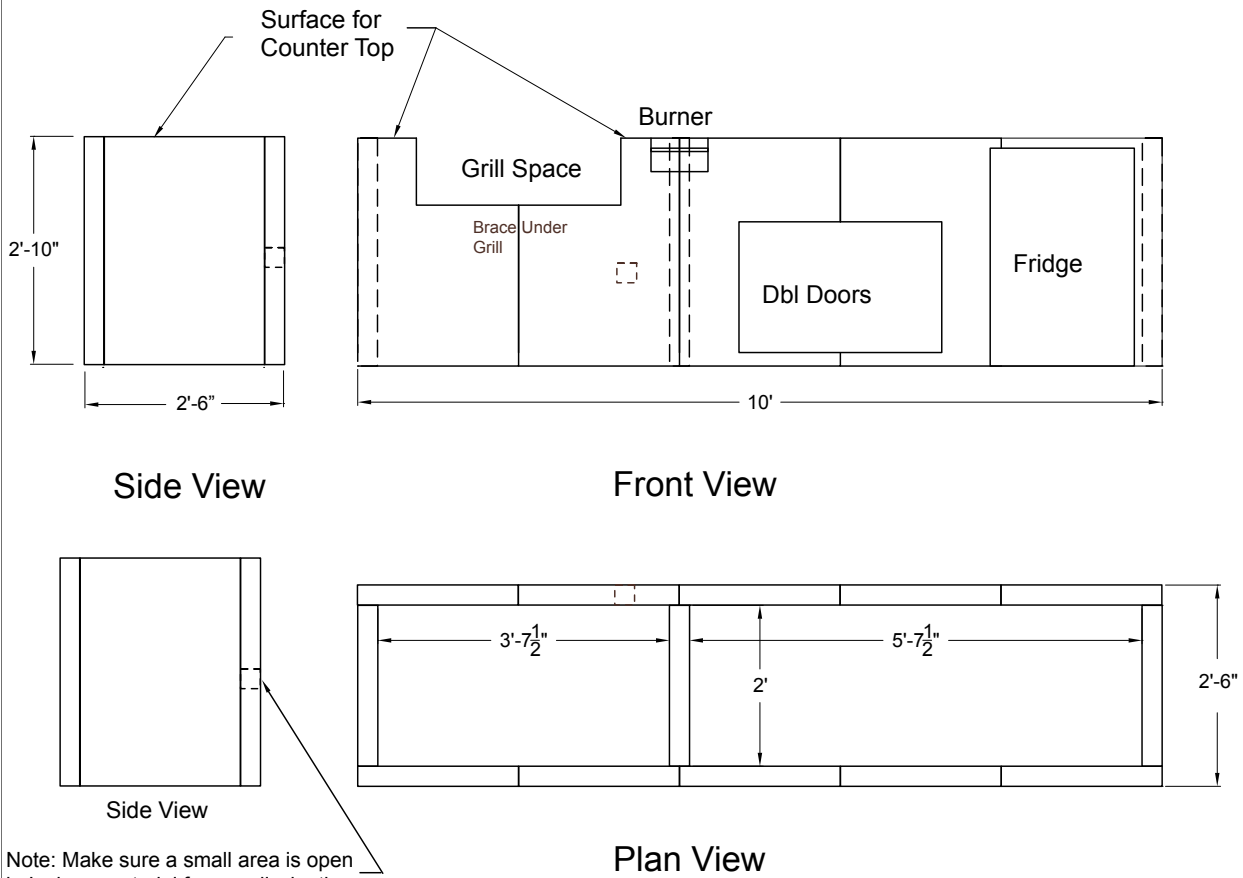
Note: Make sure a small area is open in Isokern material for gas dissipation.

To not cover opening with facing material.

Earthcore reserves the right to make changes at any time without notice in design, materials and specifications. Earthcore further reserves the right to discontinue styles and products. Please call 1-800-642-2920 for an Isokern dealer near you.

Kitchen Component Dimensions

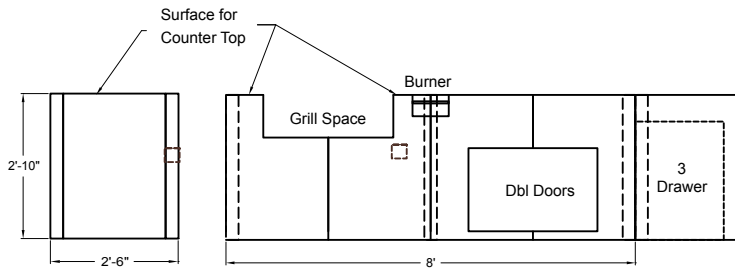
10' Kitchen



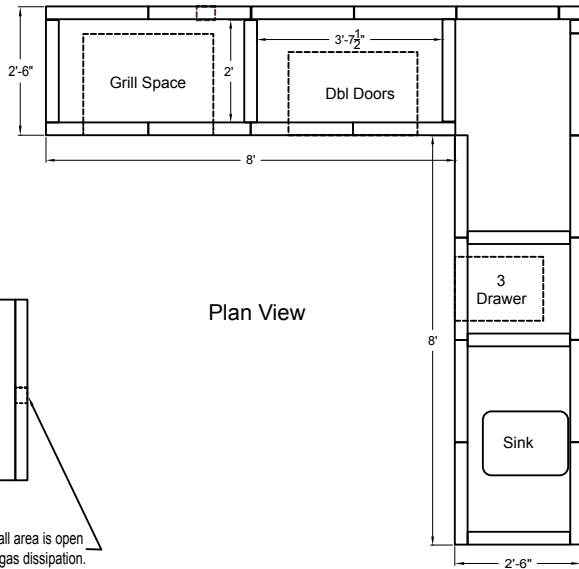
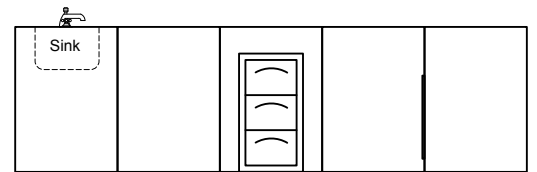
Note: Make sure a small area is open in Isokern material for gas dissipation.
 To not cover opening with facing material.

Kitchen Component Dimensions

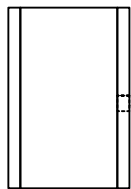
“L” Kitchen



Front View



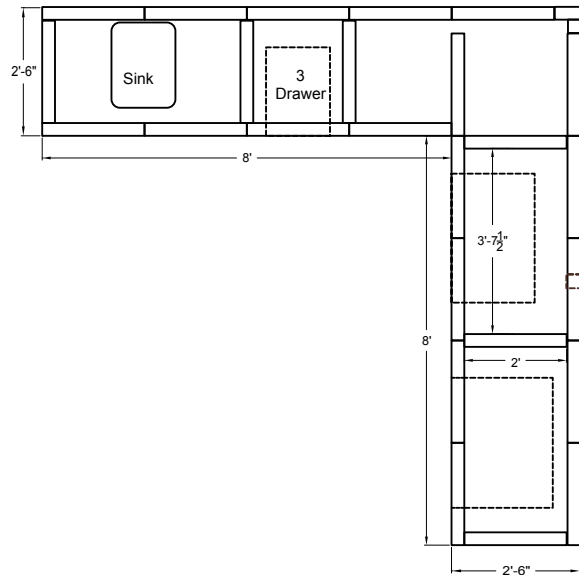
Plan View



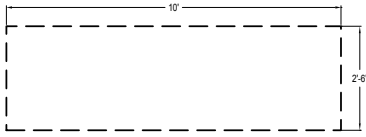
Side View

Note: Make sure a small area is open in Isokern material for gas dissipation.

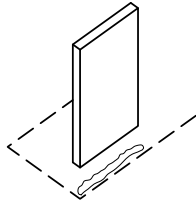
To not cover opening with facing material.



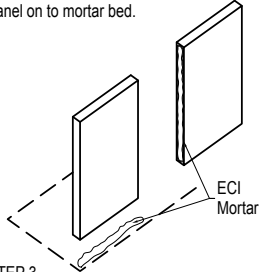
Assembly



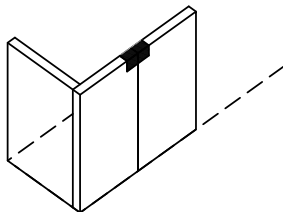
STEP 1
Outline Kitchen area on level foundation with chalk. (10' Kitchen Shown)



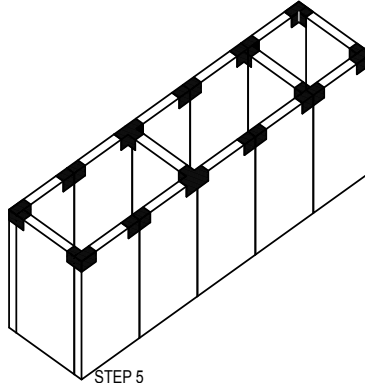
STEP 2
Place a small amount of mortar on area where first panel will sit. Firmly place 1st panel on to mortar bed.



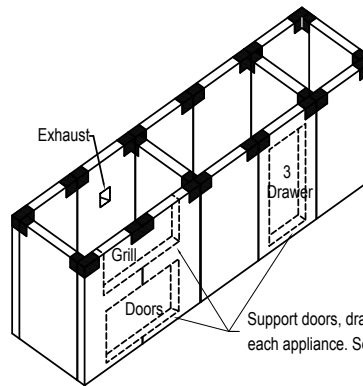
STEP 3
While firmly holding the first panel in place, run a thin ($\frac{1}{8}$ ") bead of mortar to the second panel side and butt up to the first panel. Mortar should squeeze out sides of panels.



STEP 4
Secure with straight clip, screwed into the Isokern material with $1\frac{1}{4}$ " concrete screws.

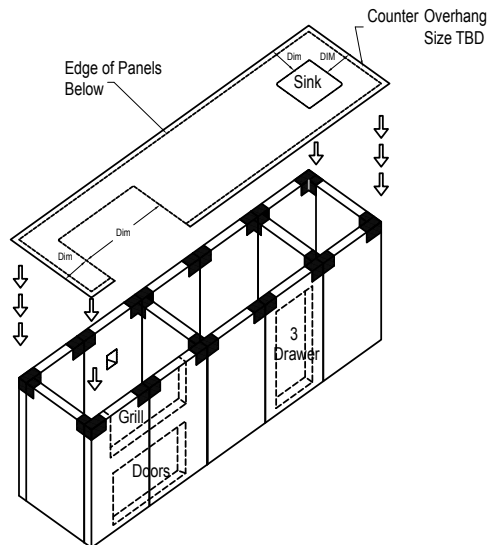


STEP 5
Continue in this manner using corner and "T" brackets for support at each joint.
**Joint support will be determined by appliance sizes.



Support doors, drawers, grills, etc. with 2 x 4's directly underneath each appliance. Secure with $\frac{1}{4}$ " tapcon screws.

STEP 6
Determined appliance location and size, then cut away Isokern material as necessary using a skill or tile saw with a diamond blade.
NOTE: A small space must be cut on the rear panels behind the grill for exhaust. This should be approx. 2" x 2" min.

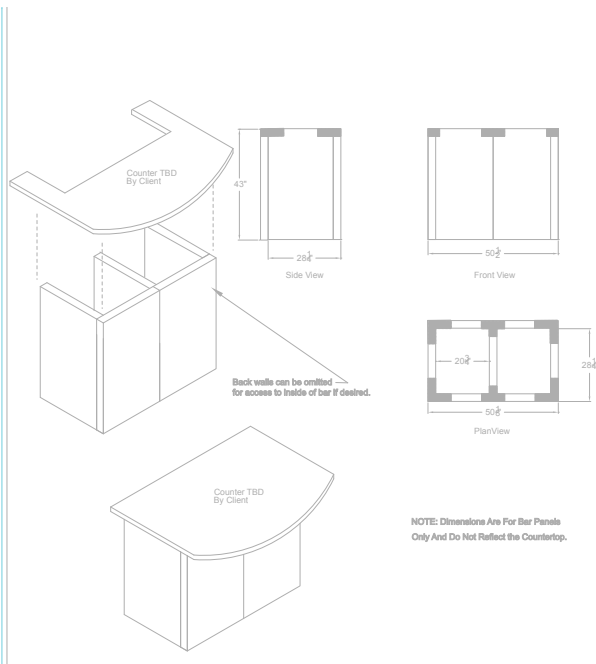


STEP 7
When ordering your counter top, make sure you give specific dimensions for items which need to be installed.

** Counter shown with $\frac{1}{4}$ " overhang.

Disclaimer:
All drawings are for illustrative purposes. Applications may vary.
Always consult applicable manufacturer's instructions.
If Isokern Systems or any Isokern material, shall not be held liable for any incidental or consequential damages or expenses arising out of the use of this kitchen system.
©Copyright is the sole property of Isokern Systems. Any reproduction or unauthorized use is strictly prohibited.
Isokern Systems components are manufactured from recycled material and might not come in standard colors. These variations should be in mind.

Specialty Applications:



**Iso-Bar
Panel Part # 43**

NOTE: Dimensions Are For Bar Panels
Only And Do Not Reflect the Countertop.

2. Isokern Kitchen Panel Curing Instructions:

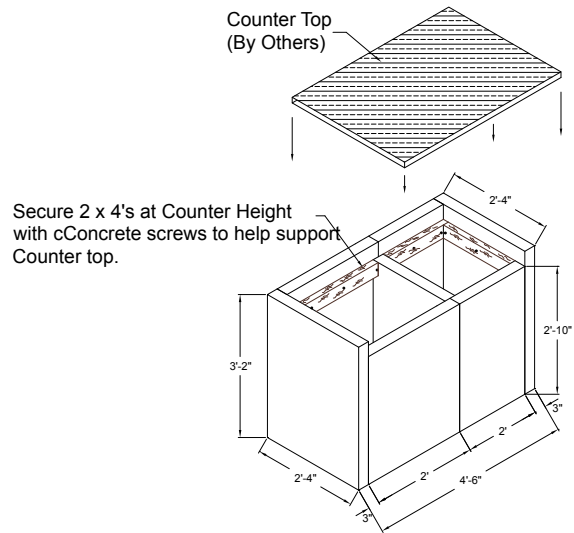
It is critical that the Isokern elements be dry before cladding the unit. Moisture left in the components from exposure during storage and shipping, as well as moisture from the installation phase, must be eliminated before the unit is put to its intended use.

The first step in reducing the ambient moisture is to be sure that the completed fireplace rest totally in a dried-in setting for a minimum of 14 days after construction of the unit is complete.

Important:

Do not throw, toss, jam, kick or otherwise force anything into the panels.

Iso-kitchen panels can be arranged in any configuration desired. Consult your local Isokern dealer or sales representative for assistance with custom applications.



**Isokern Kitchen Counter
With 4" Backsplash**

Notes

Warranty & Disclaimer

Isokern Fireplace

Earthcore offers a lifetime warranty for all Isokern fireboxes, to be free from defects in materials that negatively affect system performance from the date of purchase, subject to the terms and conditions of this limited warranty.

This warranty covers only the above stated components, and NO WARRANTY, EXPRESS OR IMPLIED, EXTENDS TO ANY OF THE HARDWARE, FOOTING, VENTS, DUCTING, METAL FLUES, FIRE BRICK OR ACCESSORIES. THIS WARRANTY DOES NOT COVER DRAFTING, SMOKING OR PUFFING OF THE FIREPLACE SYSTEM. Factors beyond the manufacturer's control affect fireplace rafting, smoking, and puffing, and Earthcore cannot guarantee these aspects of performance.

If a component is found to be defective under the terms of this warranty the party to whom this warranty is extended shall, notify Earthcore, 6899 Philips Industrial Blvd, Jacksonville, Florida 32256, in writing, by registered mail, within thirty (30) days following the discovery of the defect within the lifetime warranty period. The notice shall contain (1) the date of purchase; (2) place of purchase; (3) address of installation; (4) name, address and phone number of the owner; and (5) a brief description of the defect.

Earthcore, or any division thereof, is not responsible for any labor costs or indirect costs incurred for the replacement of defective components.

Earthcore is not responsible for misuse or mishandling of components. Nothing in this warranty makes Earthcore, or any division thereof, liable in any respect for any injury or damage to the building or structure in which the fireplace or chimney system has been installed or to persons or property therein arising out of the use, misuse, or installation of properly manufactured ISOKERN product.

EARTHCORE, OR ANY DIVISION THEREOF, SHALL NOT BE HELD LIABLE FOR ANY INCIDENTAL OR CONSEQUENTIAL DAMAGES OR EXPENSES ARISING OUT OF THE USE OF THE FIREPLACES OR CHIMNEY SYSTEMS. ALL SUCH DAMAGES AND EXPENSES ARE HEREBY EXCLUDED.

This warranty is null and void when the fireplace or chimney systems are not installed pursuant to the installation instructions provided by Earthcore or local building codes have not been followed completely.

This warranty applies only to those fireplace and chimney systems installed in the continental United States, Alaska, and Canada. If any part of this warranty is found to be unenforceable, the remaining parts shall remain in force and effect.

EARTHCORE HEREBY DISCLAIMS ALL GUARANTEES AND WARRANTIES, EXPRESS OR IMPLIED, BEYOND THE WARRANTIES SET FORTH HEREIN.

earthcore®

6899 PHILIPS INDUSTRIAL BLVD. • JACKSONVILLE, FLORIDA 32256
TEL (904) 363-3417 • TOLL 1 (800) 642-2920 • FAX (904) 363-3408