



MH8251

A MAJOR CAUSE OF CHIMNEY RELATED FIRES IS FAILURE TO MAINTAIN REQUIRED CLEARANCES (AIR SPACES) TO COMBUSTIBLE MATERIALS. IT IS OF THE UTMOST IMPORTANCE THAT THIS CHIMNEY BE INSTALLED ONLY IN ACCORDANCE WITH THESE INSTRUCTIONS.

Read through all these instructions before beginning your installation. Failure to install the chimney as described in these instructions will void the manufacturer's warranty and may affect your homeowner's insurance UL listing warranty status. Refer to the Earthcore Air-Cooled Eco-Steel Chimney system. Keep these instructions for future use.

APPLICATION AND LISTING

As specified in these instructions, shrouds are approved for use with Air-Cooled Eco-Steel Chimney (13" diameter). Air-Cooled Eco-Steel Chimney (13" Diameter) is Listed for use with appliances which have a flue temperature that does not exceed 1700°F. A Shroud built and installed in compliance with these instructions is UL Listed for use with Air-Cooled Eco-Steel Chimney (Listing Number MH8251).

SHROUD REQUIREMENTS

Shrouds can either be field-fabricated or factory fabricated, but they must meet the requirements as specified in these instructions. Shrouds must be constructed of a minimum 24 gauge (.025") stainless steel, (.028) aluminized steel, (.028) galvanized steel, or (.020) copper. Other materials may also be used, such as brick, mortar, stucco, stone, etc., provided they are completely non-combustible. Check with your local building code authorities for any shroud requirements. Shrouds must be able to be removed to allow chimney access to properly clean the chimney. Air-Cooled Eco-Steel installations, which include the use of a shroud, must comply with the following requirements (**FIG. 1**)

- Air-Cooled Eco-Steel Chimney requires a minimum 2" clearance to combustible framing and a minimum 5-1/2" clearance to combustible wall or sheathing be maintained.
- **The chase enclosure must be ventilated.**
 - The Chase Top Flashing or field-fabricated chase pan must be used. Field-fabricated chase pans are acceptable if they meet these requirements:
 - Material must be 24 gauge (.028") Galvanized steel or equivalent.
 - Chase pan opening should be 1/16" –1/8" larger than outside diameter of chimney pipe with 1/2" upturned flange/collar. A Storm Collar may be used and/or seal between chase pan and chimney with high temperature sealant.
 - Chase pan must overhang chase by 3/4" per side for proper airflow.
 - Field-fabricated spacers (1" tall, 24 gauge or, 0.028" Galvanized Steel) must be used to support the Chase Top Flashing or chase pan, in order to provide airflow.
 - Eco-Steel Rain Cap (13ECORC) must be used inside the shroud.
 - The shroud must not be in direct contact with any of the Eco-Steel Chimney components (other than Chase Pan).
 - All Open Areas of the shroud must be covered with 1/2" stainless or galvanized steel mesh screen to prevent debris from entering the shroud.
 - Shrouds must follow the dimensional requirements specified in **TABLES 1, 2 or 3**, depending on the style of shroud used.

The three basic shroud styles are: a) House, b) Mailbox, and c) Pyramid. Most factory-fabricated shrouds will fall under one of these basic style categories.

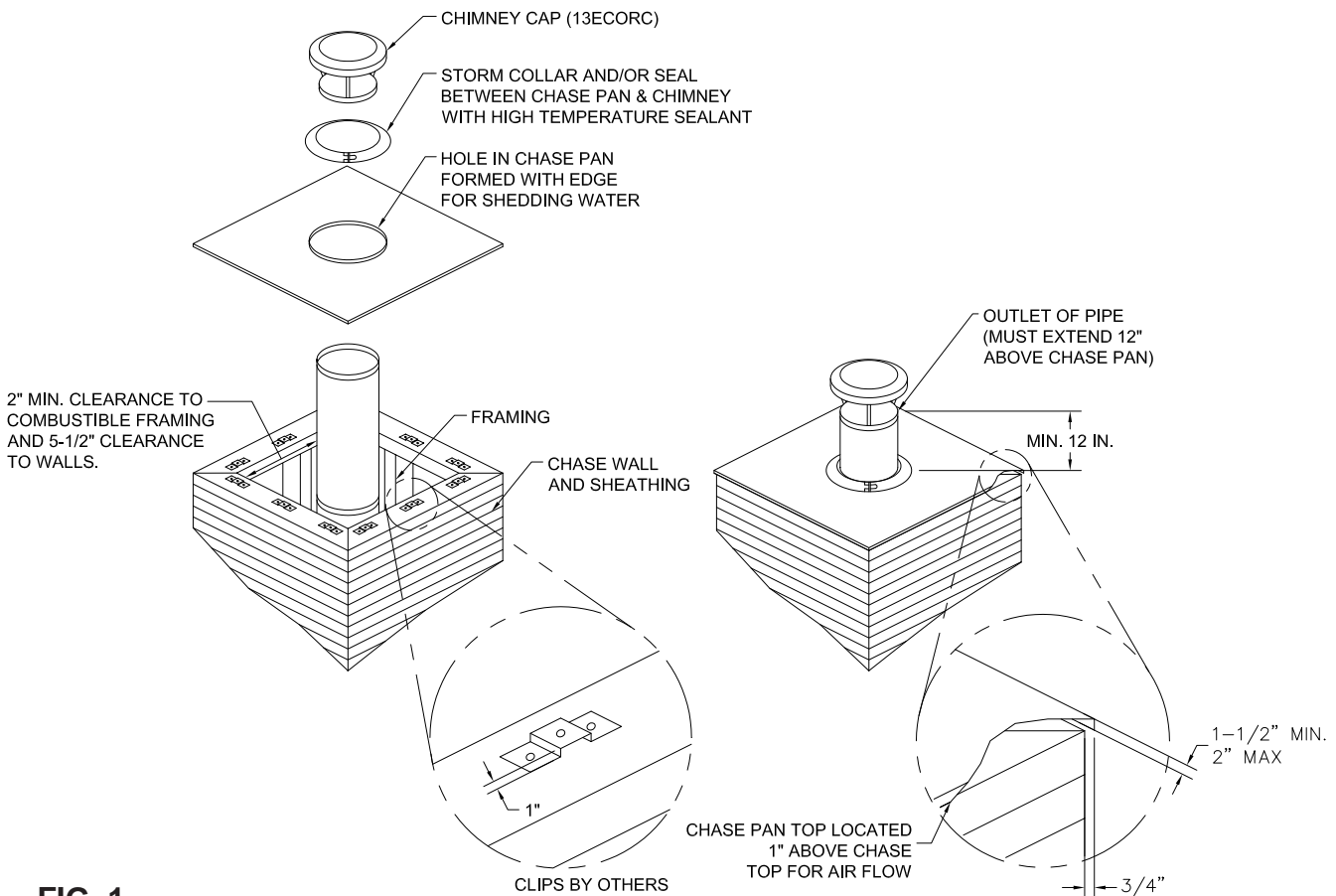


FIG. 1

MAILBOX STYLE SHROUD

The Mailbox style shroud generally has two solid sides and a solid top. The exhaust openings are on the two open ends of the shroud. (**FIG. 2**) **TABLE 1** lists the minimum shroud dimensions of the Air-Cooled Eco-Steel Chimney.

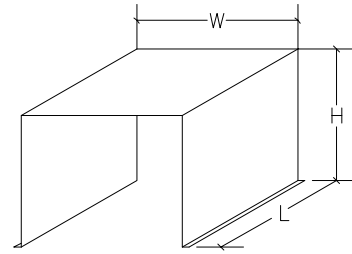
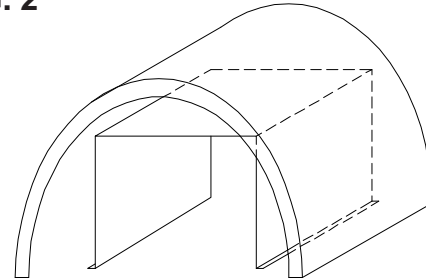


FIG. 2



INTERNAL SHROUD REPRESENTS MINIMUM DIMENSIONAL DESIGN AND OPEN AREA (FROM FIG. 2) THAT MUST BE PRESENT WHEN CONSTRUCTING SHROUD.

TABLE 1 MINIMUM DIMENSIONS

DIA.	CAP CAT NO.	H = MIN. HEIGHT	W = MIN. WIDTH	L = MIN LENGTH
13"	13ECORC	20"	27"	27"

HOUSE STYLE SHROUD

The House style shroud is roughly square or rectangular with a closed top and exhaust openings on four (4) sides (See **FIG. 3**). **TABLE 2** lists the minimum shroud dimensions, minimum Open Area per side, minimum window open area per side, and minimum base open area per side for the Air-Cooled Eco-Steel Chimney.

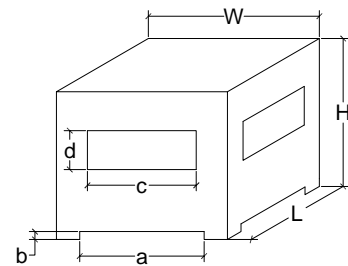
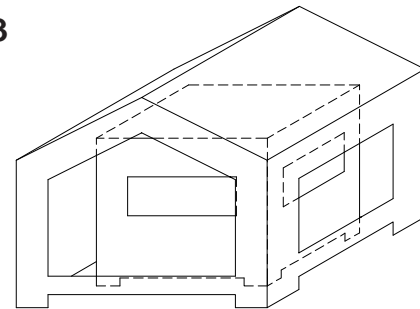


FIG. 3



INTERNAL SHROUD REPRESENTS MINIMUM DIMENSIONAL DESIGN AND OPEN AREA (FROM FIG.3) THAT MUST BE PRESENT WHEN CONSTRUCTING SHROUD.

TABLE 2 MINIMUM DIMENSIONS

DIA.	CAP CAT NO.	H = MIN. HEIGHT	W = MIN. WIDTH	L = MIN LENGTH	MIN. OPEN AREA FOR SINGLE SIDE	MIN. WINDOW OPEN AREA FOR SINGLE SIDE c x d	MIN. BASE OPEN AREA FOR SINGLE SIDE a x b
13"	13ECORC	20"	27"	27"	150 SQ. IN.	100 SQ. IN.	50 SQ. IN.

PYRAMID STYLE SHROUD

The Pyramid style shroud is roughly square or rectangular with an open top for exhaust as well as openings along the base of the four sides (See **FIG. 4**). **TABLE 3** lists the minimum shroud dimensions, including the minimum width and length and base opening area per side for the Air-Cooled Eco-Steel Chimney.

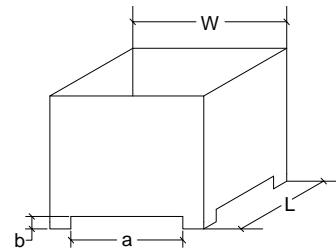
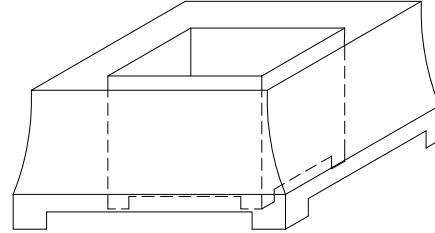


FIG. 4



INTERNAL SHROUD REPRESENTS MINIMUM DIMENSIONAL DESIGN AND OPEN AREA (FROM FIG.4) THAT MUST BE PRESENT WHEN CONSTRUCTING SHROUD.

TABLE 3 MINIMUM DIMENSIONS

DIA.	CAP CAT NO.	W = MIN. WIDTH	L = MIN LENGTH	MIN. OPEN AREA FOR SINGLE SIDE a x b
13"	13ECORC	27"	27"	66 SQ. IN.

WARRANTY

Earthcore Industries makes no warranty or representation of any kind, expressed or implied, concerning the materials, quality, workmanship or installation of the third party manufactured shrouds that may be used in connection with the Air-Cooled Eco-Steel Chimney System. Earthcore Industries expressly disclaims any and all liability of any kind related to the materials, quality, workmanship or installation of such third party manufactured shrouds.



Chimney Solutions

6899 Phillips Industrial Blvd. • Jacksonville, FL., 32256
(800) 642-2920 • Fax (904) 363-3408