

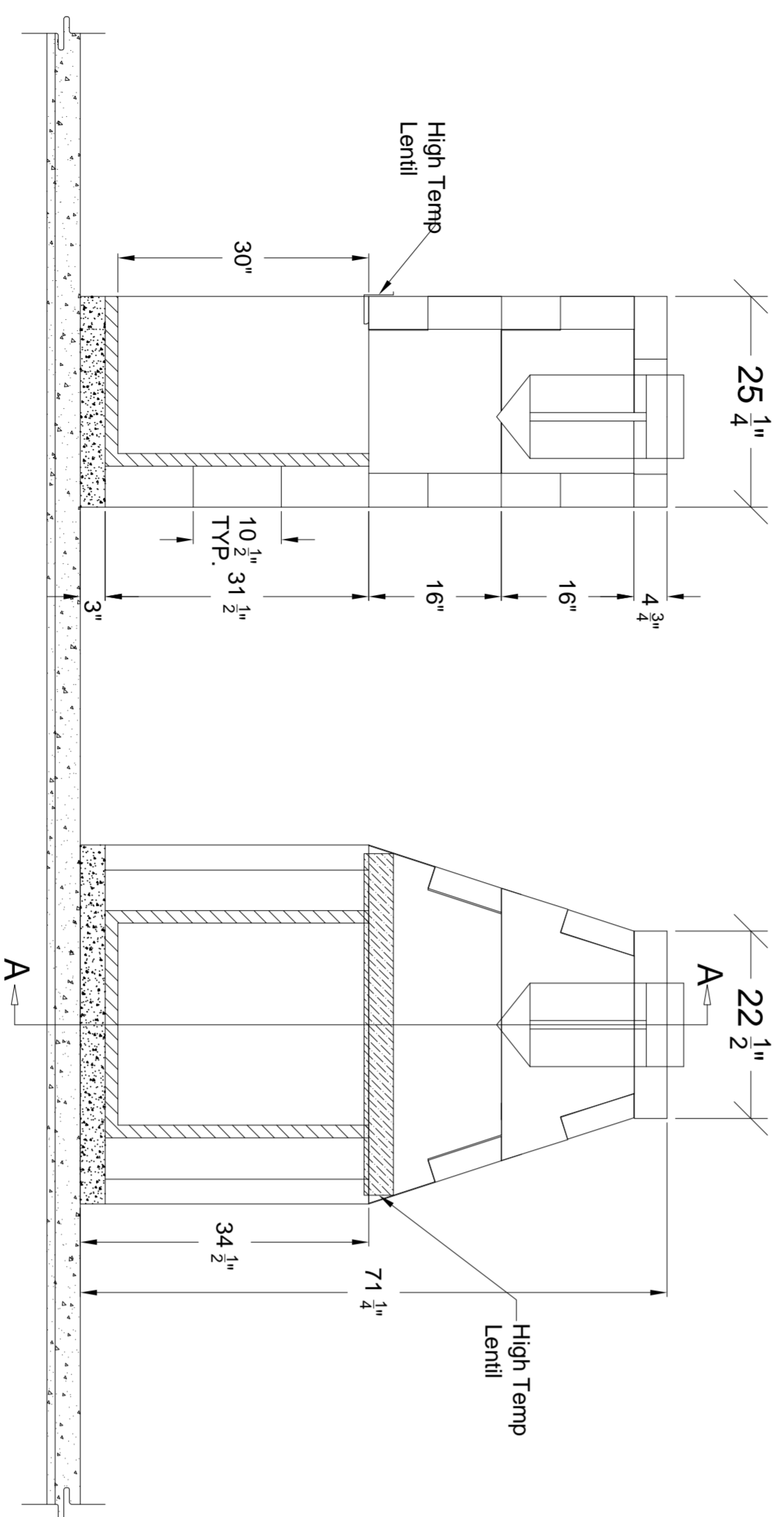
I. MANUFACTURER:
 A. ISOKERN Fireplace and Chimney Systems, North America
 distribution by Earthcore Industries, LLC, Jacksonville, Florida
 (Telephone 800-642-2920)

II. PRODUCT DESCRIPTION:

- A. Modular refractory masonry precast fireplace.
 1. Designed for field assembly as a gas only, B-vent appliance.
 2. All interlocking parts necessary for assembly of a complete
 firebox and smoke dome.

III. MATERIALS:

- A. Light weight concrete of a proprietary mixture of Icelandic
 volcanic aggregate and aluminum cement for precast firebox.
 1. Compressive Strength: Firebox block: 972 psi.
 B. Premixed (dry) EARTHCORE ADHESIVE.
 1. Tensile strength: 807 psi; Compressive strength: 2460 psi.
 2. Tested per ASTM C109, ASTM C307, and ANSI 118.4.
 C. Standard 1 1/8" high temperature refractory brick to line firebox
 interior.

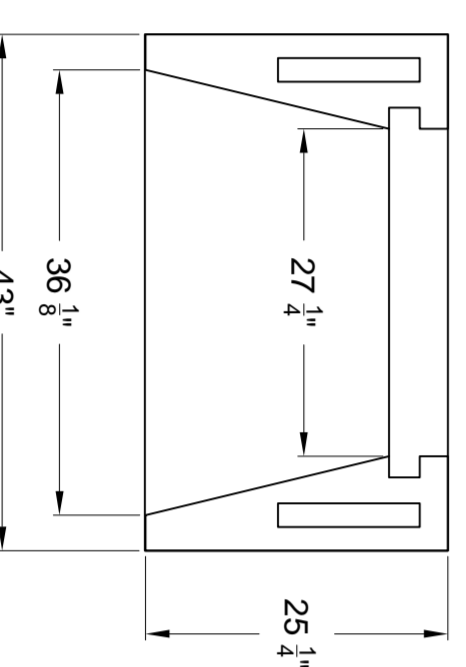


SECTION A-A

FRONT VIEW

**PLAN, SECTION and ELEVATION of
 IBV 36 FIREPLACE**

SCALE: 3/4" = 1'-0"



PLAN VIEW

IV. INSTALLATION:

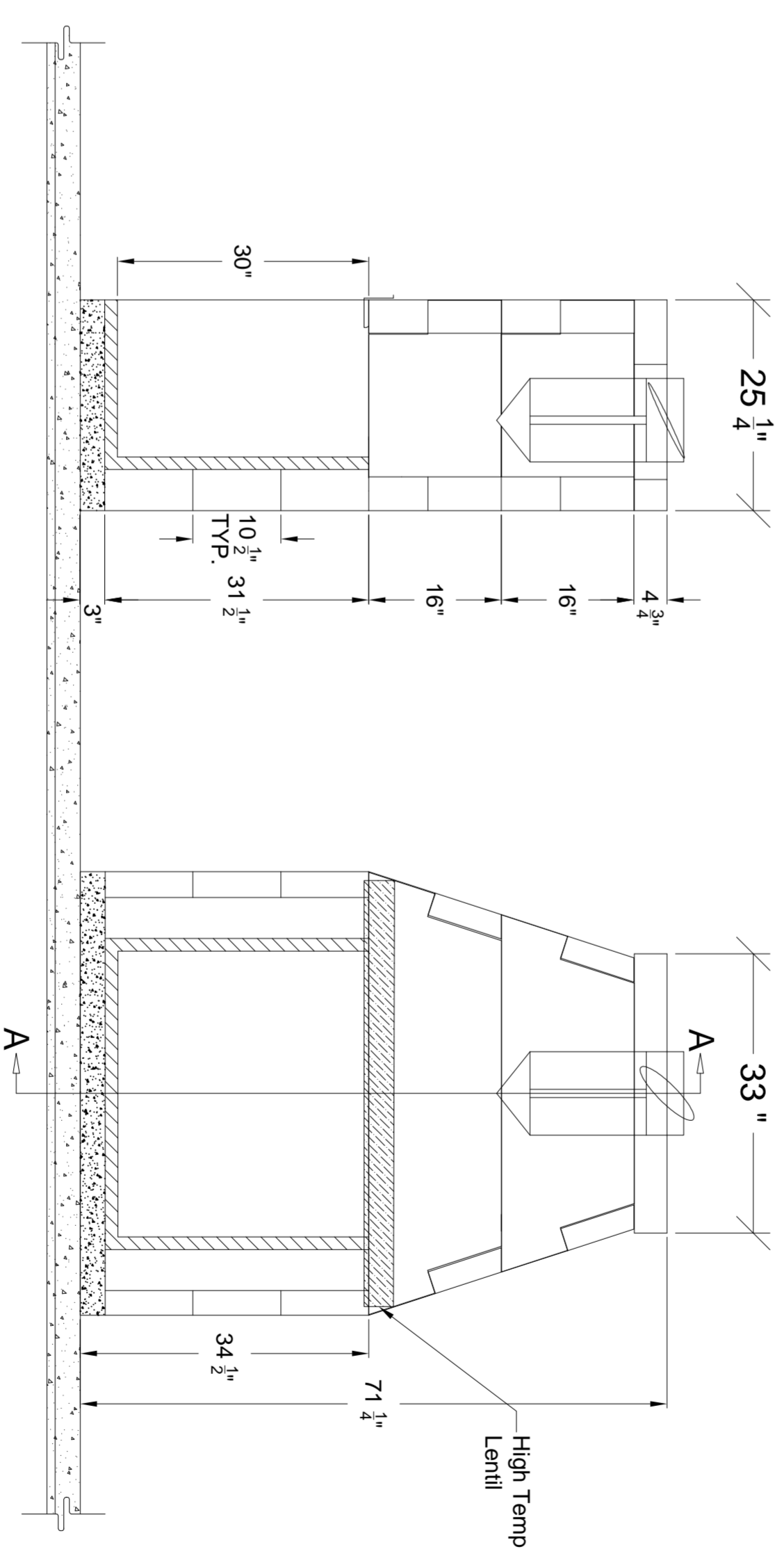
- A. Reference manufacturer's installation instructions for standard
 configurations, weights, sizes and installation details.
 B. Suitable masonry foundation or structural wood floor system must
 be provided.
 C. Unit to be assembled on site per manufacturer's illustrated
 instructions.
 1. Premixed EARTHCORE ADHESIVE is used at all joints between
 components.
 2. Firebox to be lined with a minimum 1 1/8" rated firebrick.
 D. Firebox units listed for "zero clearance" to uninsulated wood
 framing members.
 E. A 1 1/2" minimum clearance to combustible materials is
 recommended.
 F. A 3" minimum clearance to insulation required.

V. CERTIFICATION:

- A. PFS Corporation, PFS Report No. 09-79
 B. Meets or exceeds ANSI Z 21.50b-2009, CSA 2.22b-2009.

VI. CODE COMPLIANCE:

ICC No. ESR 2316 / LARR #25483 / MEA N.Y.C. 241-90-E

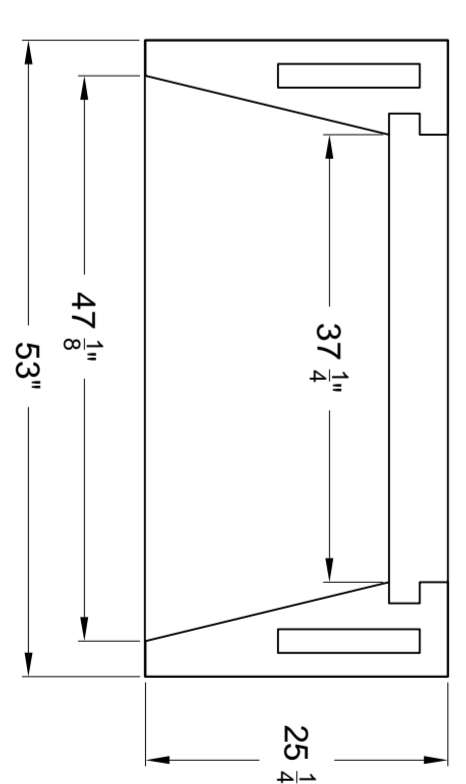


SECTION A-A

FRONT VIEW

**PLAN, SECTION and ELEVATION of
 IBV 46 FIREPLACE**

SCALE: 3/4" = 1'-0"



PLAN VIEW

**FIREBOX
 DETAILS/
 DIMENSIONS**



A PRODUCT OF EARTHCORE INDUSTRIES

6899 PHILLIPS INDUSTRIAL BLVD
 JACKSONVILLE, FLORIDA 32256
 TEL (904) 363-3417
 FAX (904) 363-3408
 www.isokern.net

| REVISIONS | BY |
|-----------|----|
| | |
| | |
| | |
| | |
| | |

DESIGNED BY
JMK
 RELEASE DATE
09/01/09
 SCALE
3/4" = 1'-0"
 REVNO

SHEET

IBV1.0