

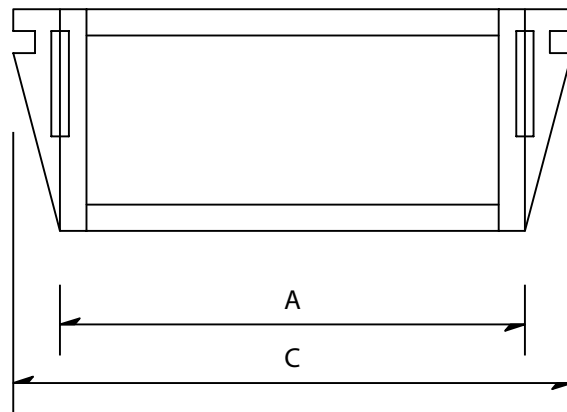
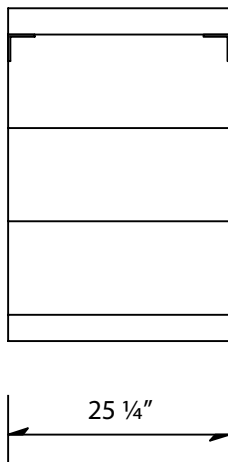
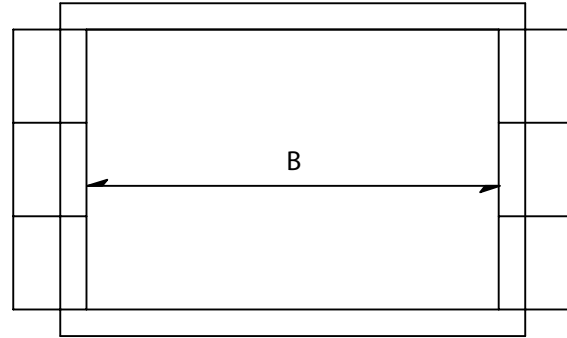
## Specialty Applications: See-Thru

The firebox side walls must sit three inches (3") on the base plate. Since the side wall components flair from three inches (3") at the narrow end to eight inches (8") on the wide end, the side walls will overhang the base plate by approximately five inches (5") at their wide end. Support this overhang with masonry.

See-Thru or two-sided Vent-Free fireplace can be constructed from the standard one-sided unit components by eliminating the back wall assembly.

In this installation the standard side wall components are reversed so that the standard side wall taper sits to the outside of the box leaving the inside of the see-thru firebox with two straight and parallel interior walls.

Angle steel three inch by three inch by one-quarter inch (3" x 3" x 1/4") should be set on top of the side wall assembly to span each of the openings of the see-thru before the top plate is set into place. The steel can be set with the angle leg either up or down.



Model	A	B	C
36"	43"	37"	53"
42"	49"	43"	59"
46"	53"	47"	63"