

ISOKERN FIREPLACE AND CHIMNEY SPECIFICATIONS:

I. MANUFACTURER:

A. Earthcore Industries, LLC, Jacksonville, FL (Telephone 800-642-2920)

II. PRODUCT DESCRIPTION:

- A. Modular refractory precast fireplace and chimney components.
 1. Designed for field assembly as a fireplace and chimney unit.
 2. All interlocking parts necessary for assembly of a complete firebox and smoke dome.
 3. Interlocking double module chimney components (DM).

III. MATERIALS:

- A. Light weight concrete of a proprietary mixture of Icelandic volcanic pumice aggregate and cement for precast firebox, chimney block and flue liner components.
 1. Compressive Strength: Firebox and Chimney Block: 972 psi.
 2. Compressive Strength: Flue Liner: 1175 psi.
- B. Premixed (dry) EARTHCORE ADHESIVE.
 1. Tested per ASTM C109, ASTM C307, and ANSI 118.4.
- C. Standard 1 1/8" medium duty refractory brick to line firebox interior.
- D. Standard cast iron poker-style damper (optional top mount or in-line damper available).

IV. INSTALLATION:

- A. Reference manufacturer's installation instructions for standard configurations, weights, sizes and installation details.
- B. Suitable masonry foundation: noncombustible hearth extensions must be provided.
- C. Suitable combustible floor: foundation as a Fire-Line application; noncombustible hearth extensions must be provided.
- D. Unit to be assembled on site per manufacturer's illustrated instructions.
 1. Premixed EARTHCORE ADHESIVE is used at all joints between components.
- E. Standard fireplace and chimney units listed for "zero clearance" to uninsulated wood framing members.
 - F. A 1 1/2" minimum clearance envelope to combustible materials is recommended.
 - G. A 3" minimum clearance envelope to insulation required.

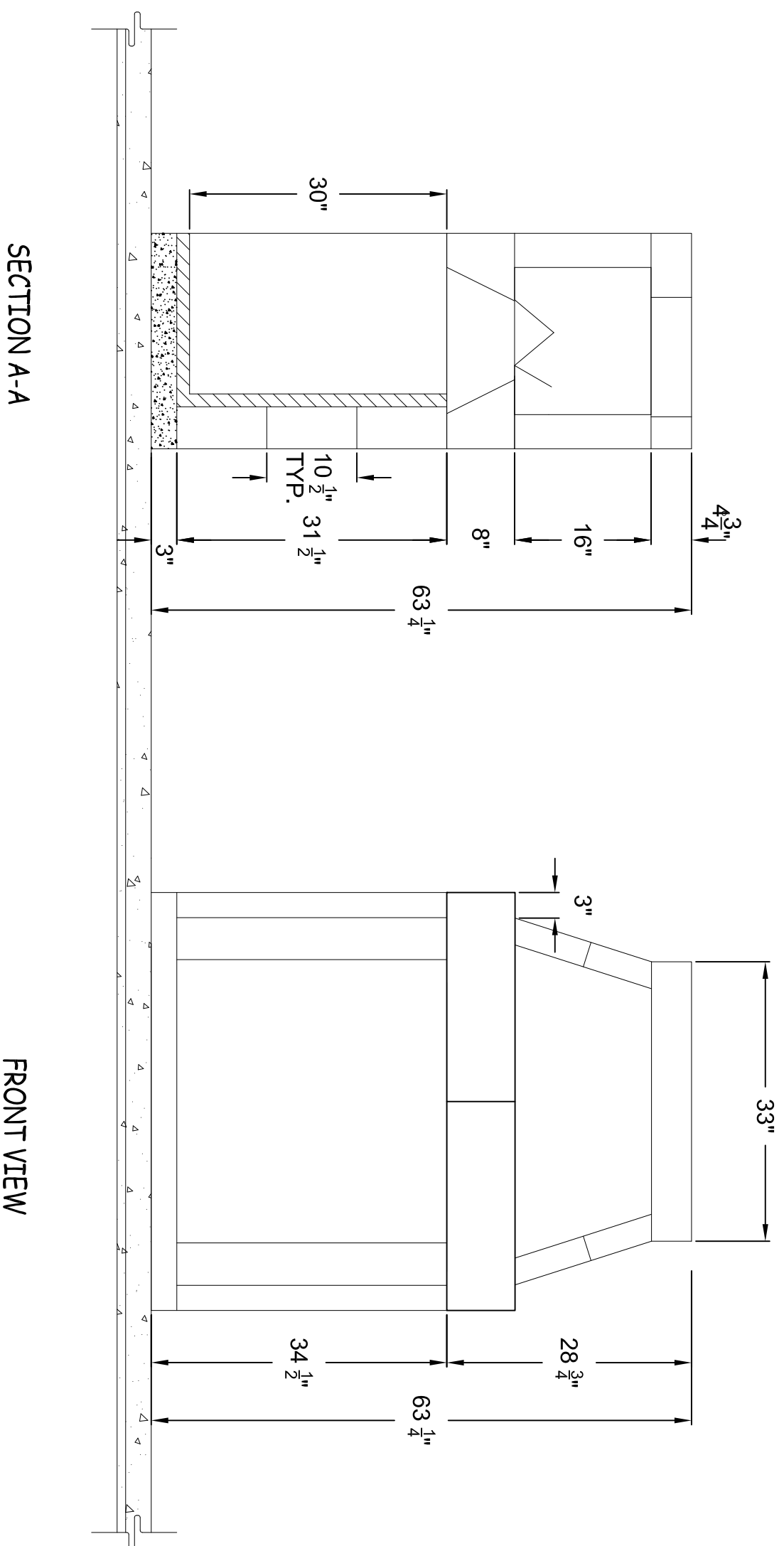
V. CERTIFICATION:

- A. Warnock Hersey/Intertek Testing Services Report No. 3159556MID-008.
- B. Meets or exceeds U.L. 103HT; U.L. 127-08; ULC S610-87; ANSI 2.11.

VI. CODE COMPLIANCE:

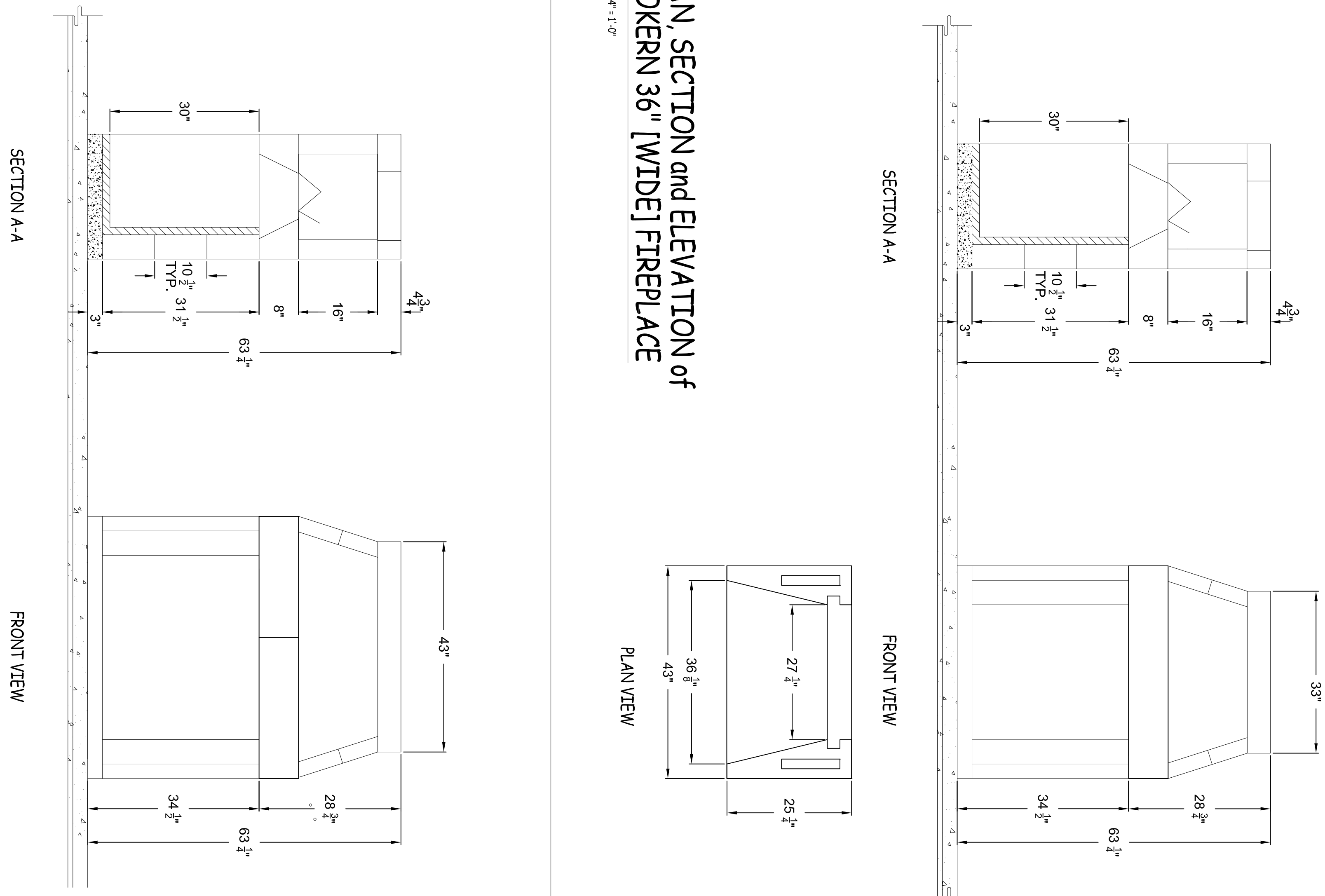
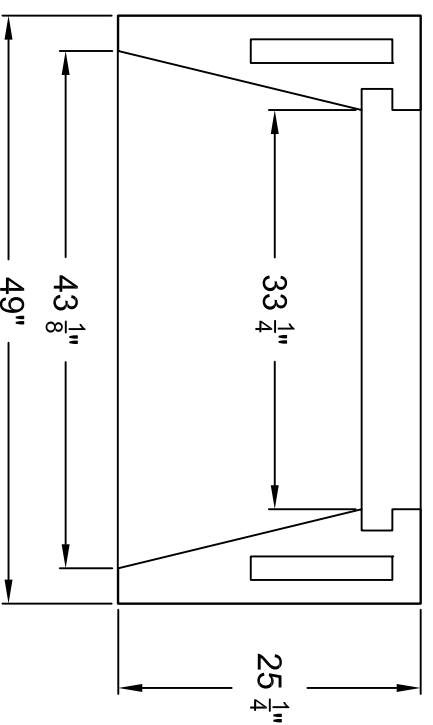
- A. ICC No. ESR-2316 / LARR #25483/ MEA N.Y.C. 241-90-E.
- B. Standard fireplace and chimney units listed for "zero clearance" to uninsulated wood framing members.

Note: Isokern components are a natural material and slight variations in dimensions may occur. These should be no more than $\frac{3}{8}$ ".



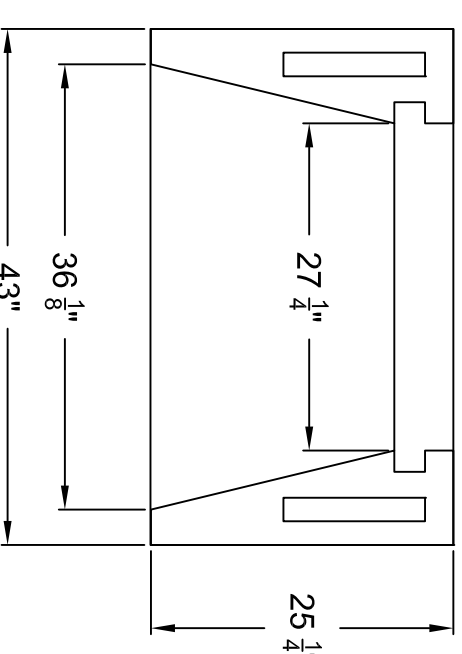
PLAN, SECTION and ELEVATION of ISOKERN 42" [WIDE] FIREPLACE

SCALE: 3/4" = 1'-0"



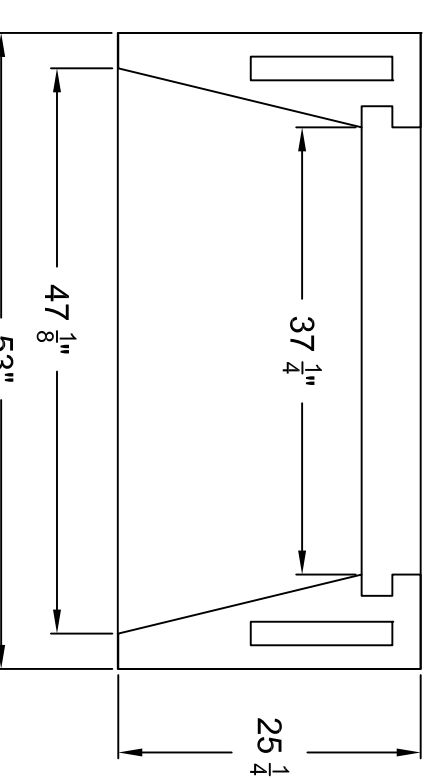
PLAN, SECTION and ELEVATION of ISOKERN 36" [WIDE] FIREPLACE

SCALE: 3/4" = 1'-0"



PLAN, SECTION and ELEVATION of ISOKERN 46" [WIDE] FIREPLACE

SCALE: 3/4" = 1'-0"



REVISIONS

BY

6899 PHILLIPS INDUSTRIAL BLVD
 JACKSONVILLE, FLORIDA 32256
 TEL (904) 363-3417
 FAX (904) 363-3408
 www.isokern.net



A PRODUCT OF EARTHCORE INDUSTRIES

FIREBOX
 DETAILS/
 DIMENSIONS

DRAWN BY: JMK
 RELEASE DATE: 09/01/09
 SCALE: 3/4" = 1'-0"
 REVISIONS:

SHEET
S1.0